

Windows XP Installation Guide v.1.1

Minimum Requirements

Windows XP Home or Pro installed. You'll need an IEEE 1394 firewire port.

We recommend an 800 MHz or faster PIII or PIV processor with at least 256 MB of RAM.

Also have WDM or ASIO 1 capable music software.

Pre Installation

1. Make sure the Firestation is initially disconnected, exit out of all windows programs and disable Anti-virus protection.
2. Insert the installation disc, click "OK" on the "Firestation" window, and then choose "Install".
3. If a window appears to install ASIO.reg, please click "YES" to install. Click "OK" if the installation was successful. If you do not see this step, please proceed.

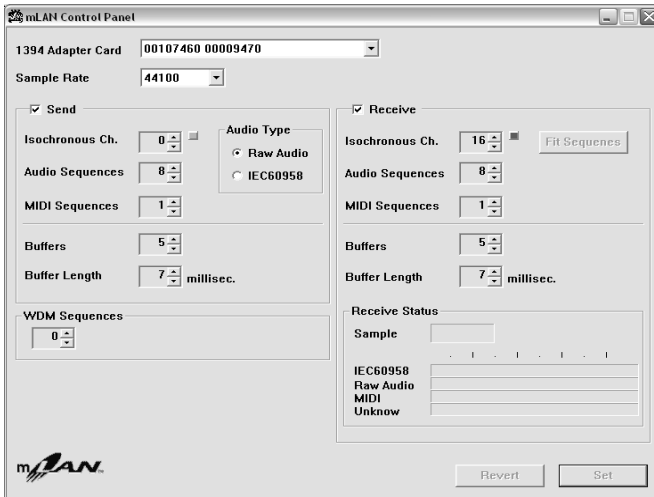
Installation

1. Initially you'll have 3 windows: "Welcome", "License agreement", and "Choose destination". Click "Next>" to proceed through these or choose "BROWSE" if you wish to choose a different installation location.
2. A hardware wizard will install Yamaha mLANbus. It may get stuck in a loop trying to install itself. Click "Next>" when visible. Click "Yes" when completed.
3. Once done, a series of hardware wizards will appear to install the drivers. Please choose "Next>", "continue anyway", and "Finish" when prompted.

Final Steps

1. The "Patchbay Initialization" window will appear. Click "Next>" to proceed.
2. The "Installation Complete" window will appear. Connect the Firestation with the provided firewire cable and power it on. Set **CLOCK** to **EXT** and toggle the LED to **mLAN**.
3. Click "Finish". Then reboot the computer.

Congratulations! Please run the mLAN Control Panel and Patchbay to make the final settings to begin recording with the Firestation. See flip side for details.



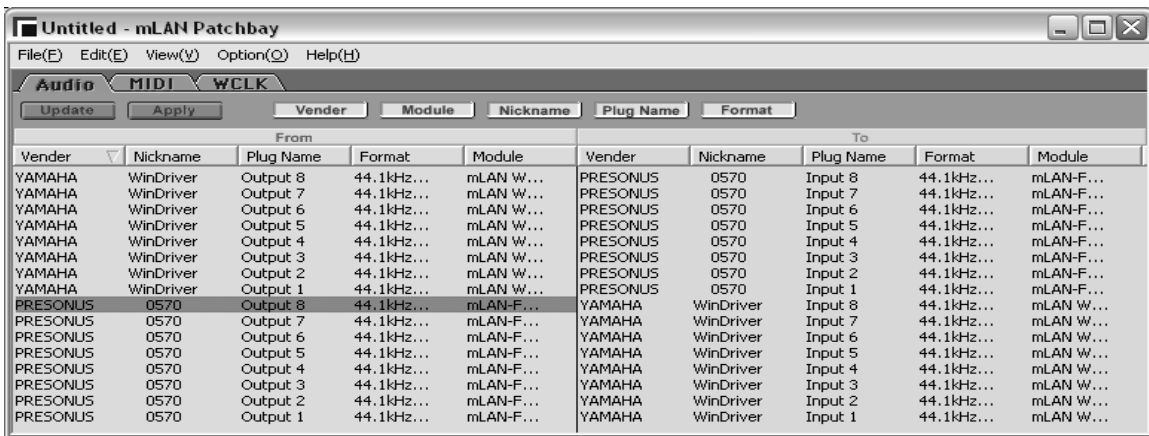
Run the mLAN Control Panel

Enable WDM sequences to use WDM drivers.

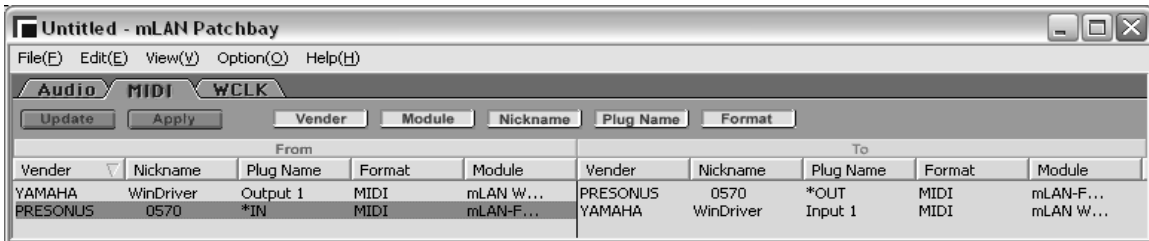
Disable WDM sequences to 0 to use ASIO drivers.

“SET” your changes.

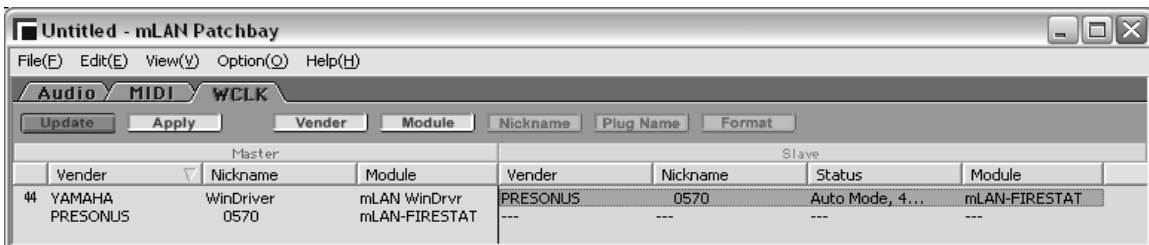
Run the mLAN Patchbay. Hold Ctrl/Shift and right click to make the connections.



Connect Yamaha Outputs to Presonus Inputs and Presonus Outputs to Yamaha Inputs.



Connect Yamaha Output 1 to Presonus *OUT and Presonus *IN to Yamaha Input 1



Right click Presonus line on the Slave side and select WinDriver.

For all your settings to take affect, you must hit APPLY.